



1901/50 Albert Road South Melbourne VIC

2 **1** **1**

Located in the coveted Albert Road precinct with convenient access to some of Melbourne's best cafe's and only a short tram ride into the CBD, this inner city abode will not last long.

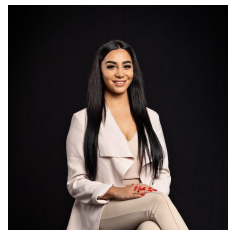
This spacious two bedroom apartment has a fantastic open plan kitchen and lounge area and offers stunning views overlooking South Melbourne and onto Port Phillip Bay. The master bedroom is complete with floor to ceiling windows while the second bedroom boast sensible storage and a fold out bed.

Building facilities include:

- Exclusive residents' only lounge, bar, business centre, health and wellbeing centre, poker room and rooftop

Type : Apartment

View : <https://www.innerrealestate.com.au/lease/vic/inner-city/south-melbourne/residential/apartment/6138940>



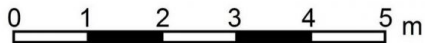
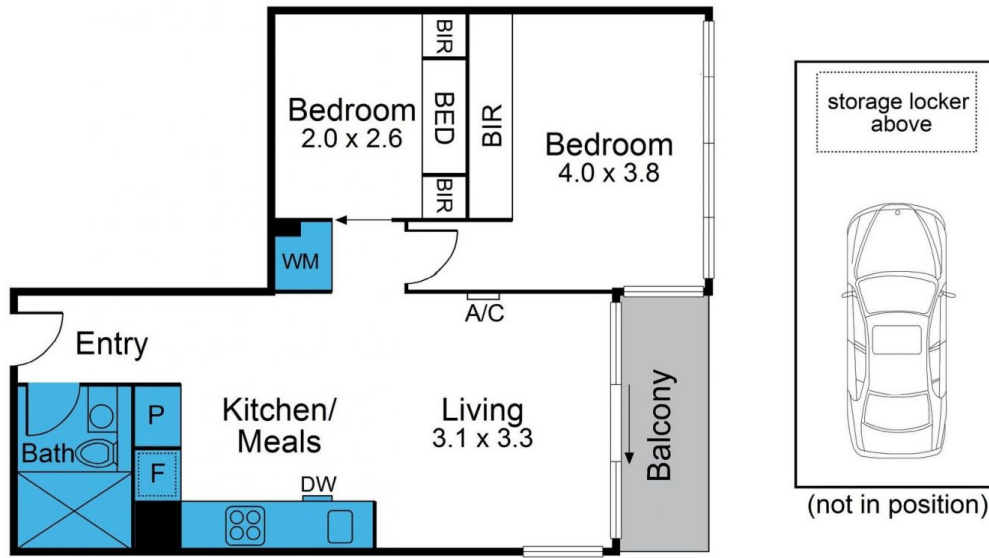
Maha Yehia
+61 3 9804 5551



Maya Angela
+61 3 9804 5551

[For full version visit the website](https://www.innerrealestate.com.au)

1901/50 Albert Road SOUTH MELBOURNE



Scale in metres. Indicative only. Dimensions are approx.

