



**INNER REAL ESTATE
NEXTRE**

Private Inspections Made Easy

- Book**
Click "Book an Inspection Time" to select a time. Alternatively click "Contact Agent" and you will be sent a link to the online booking system.
- Inspect**
Our friendly team of Sales and Leasing agents will take you on a private inspection of the property at a time that is suitable for you.
- Update**
By registering you confirm your place at the inspection. You will immediately be informed of any changes and updates to the property including price.



2904/46-50 Haig Street Southbank VIC

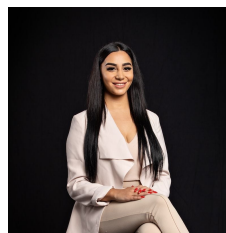
1 1 1

Located in the Tiara complex, this spacious one-bedroom apartment has been designed for modern living in Southbank. It includes built in wardrobe, open plan living area leading to large balcony, heating & cooling, and a secure car space.

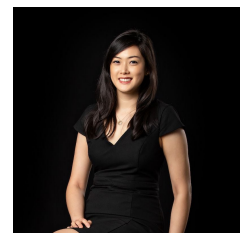
Tiara residential complex is conveniently located in the heart of Southbank, opposite Crown Entertainment Complex and only minutes to the CBD, Southbank retail stores, cafes and restaurants with easy access to public transport.

Type : Apartment

View : <https://www.innerrealestate.com.au/lease/vic/inner-city/southbank/residential/apartment/6139553>



Maha Yehia
+61 3 9804 5551



Jane Wong
0418 511 885