

302/589 Elizabeth Street Melbourne VIC

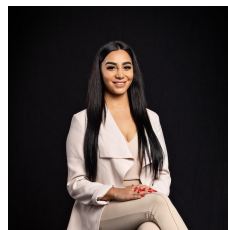
2 1

Immaculate apartment located very close to Victoria Market and Melbourne Central, also within walking distance to RMIT and Melbourne University. Trams at your door step and train station just down the street.

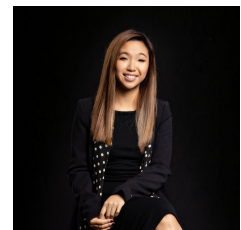
Type : Apartment

View : <https://www.innerrealestate.com.au/lease/vic/inner-city/melbourne/residential/apartment/6524536>

This spacious two bedroom apartment features a sleek central bathroom, contemporary kitchen with plenty cupboard space, colour-matched dishwasher, European laundry, open plan living/dining and carpet throughout. Split-system air-conditioning and NBN are also installed.



Maha Yehia
+61 3 9804 5551



Hayley Tran
+61 3 9804 5551

