



INNER REAL ESTATE

NEXTRE



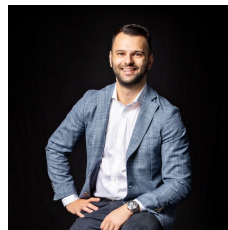
332/673 La Trobe Street Docklands VIC

2  1 

Perfected by a premium position neighbouring the magnificent Marvel Stadium, this well-presented apartment presents an alluring opportunity for market entrants and savvy investors with its light-filled living zones and state-of-the-art resident's facilities. Set on the 3rd floor of the sophisticated Lacrosse complex, the apartment delivers exceptional convenience to trams, Southern Cross Station, Skybus, Marvel Stadium, Docklands restaurants and cafes, DFO shopping, Melbourne Aquarium and Crown Entertainment Centre.

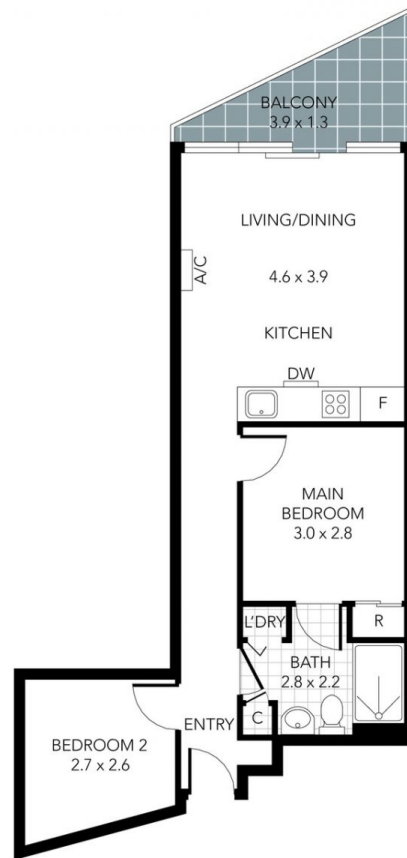
- ? Two bedrooms fitted with mirrored built-in-robos
- ? Ensuite-effect bathroom with toilet
- ? Open plan living and dining zone enriched with carpet underfoot
- ? Kitchen equipped with stainless steel appliances
- ? Sliding doors opening onto triangular balcony

Price : \$ 335,000
Building Size : 52.5 sqm
View : <https://www.innerrealestate.com.au/sale/vic/inner-city/docklands/residential/apartment/7610867>



Anthony Cimino
+61 3 9804 5551

<https://www.innerrealestate.com.au>



THIS PLAN IS NOT TO SCALE. MEASUREMENTS ARE INDICATIVE AND IN METRES. SITE PLAN REFLECTS APPROXIMATE POSITION OF BUILDINGS ON PROPERTY ONLY AND IS NOT AN ACCURATE REPRESENTATION OF VEGETATION AND OTHER EXTERNAL LANDSCAPE FEATURES. THIS PLAN SHOULD NOT BE RELIED UPON AND INTERESTED PARTIES SHOULD MAKE THEIR OWN ENQUIRIES.

floorpik by scandipik