



INNER REAL ESTATE NEXTRE

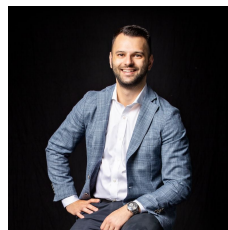


706/16 Liverpool Street Melbourne VIC

1 1 1

This sophisticated apartment, in the 'Liverpool 16' building designed by renowned architecture firm Darly Jackson, is situated in the 'Paris End' of Melbourne's CBD, just metres to an array of shops, award winning cafés and restaurants, beautiful parks, transport and entertainment options including the surrounding Theatre District. Unique, contemporary and enhanced with a generous flowing floor plan, this modern, spacious and luxurious pad epitomizes Melbourne's' urbane lifestyle perfectly. Resplendent with a wide-fronted kitchen, equipped with stone bench tops, stainless-steel gas cooktop, electric oven, range hood and colour-matched dishwasher, overlooking the extensive open plan living and dining area, highlighted by floor-to-ceiling windows, polished timber floors and balcony. A sizeable bedroom complemented with luxury carpets and built-in robes, stylish bathroom, study nook, split-system, wall panel heater, intercom and lift access

Price : \$ 508,000
Building Size : 61 sqm
View : <https://www.innerrealestate.com.au/sale/vic/inner-city/melbourne/residential/apartment/7736444>

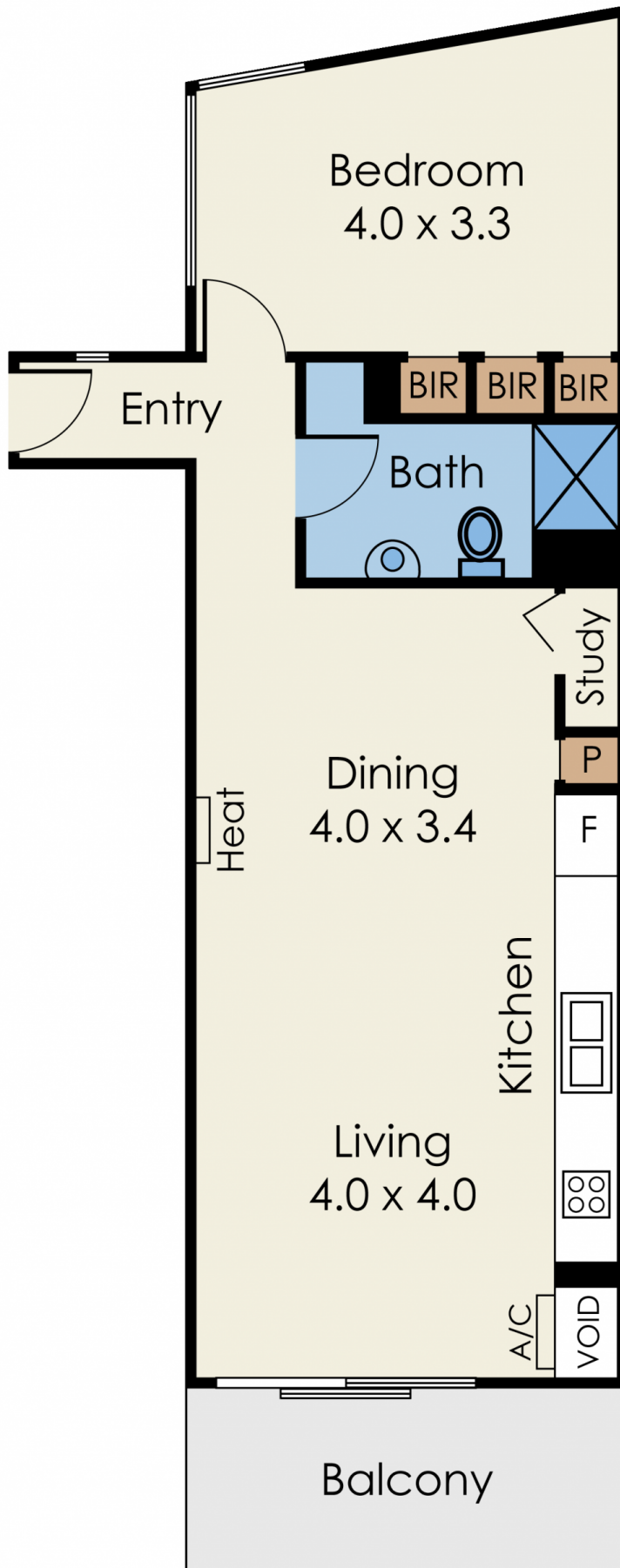


Anthony Cimino
+61 3 9804 5551



Annalise Harvey
+61 3 9804 5551

706/16 Liverpool Street, Melbourne



Not to Scale

Every care has been taken to verify the accuracy of details in this brochure. Prospective purchasers are requested to take such action as is necessary to satisfy themselves of any pertinent matters