



### 804/589 Elizabeth Street Melbourne VIC

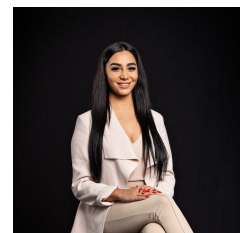
1 1

This 1 bedroom apartment located very close to Victoria Market and Melbourne Central, also within walking distance to RMIT and Melbourne University. Trams at your door step and train station just down the street. This spacious one bedroom apartment (approximately 56sqm) provides a sleek ensuite to the bedroom, modern kitchen with plenty cupboard space, colour-matched dishwasher, European laundry, open plan living/dining and carpet throughout. Split-system air-conditioning and NBN are installed.

**Building Size** : 6 sqm  
**View** : <https://www.innerrealestate.com.au/lease/vic/inner-city/melbourne/residential/apartment/7743802>



**Tim Bush**  
+61 3 9804 5551



**Maha Yehia**  
+61 3 9804 5551