

### 1601/109 Clarendon Street Southbank VIC

1 1

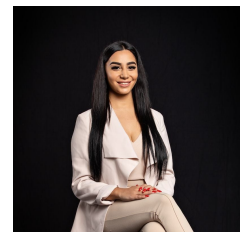
**View :** <https://www.innerrealestate.com.au/lease/vic/inner-city/southbank/residential/apartment/7747221>

Positioned on the 16th floor of the landmark 109 Clarendon building this newly furnished modern, spacious and light filled one bedroom apartment is only moments to Crown Entertainment Complex, South Melbourne Market, cafes, restaurants, Arts Centre, Albert Park Lake and with public transport on your doorstep exploring the inner-city has never been easier.

Comprising a functional floor plan with floor-to-ceiling windows, open plan living, balcony, kitchen with stainless steel appliances, master bedroom with built-in wardrobe and a central bathroom with European laundry. Also features secure swipe and intercom access along with resident facilities including concierge, cinema lounge, conference room, gymnasium.



**Jerry Bao**  
03 9804 5551



**Maha Yehia**  
+61 3 9804 5551