



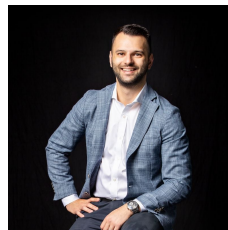
515/13 Point Park Crescent Docklands VIC

3 2 2

Discover Yarra Point luxury where spectacular views of the city skyline and marina form the focus of everyday life and sophisticated style stretches across two sumptuous levels with family-sized dimensions delivering a lifestyle of indulgence. Crafted to create incredible cohesion between the living, dining and kitchen whilst spanning out onto a covered balcony where you can entertain with ease and celebrate special occasions with family and friends.

- ? Three robed bedrooms across two levels
- ? Two bathrooms including one with dual vanities and bathtub
- ? Private study area
- ? Expansive living and dining zone
- ? Quality equipped kitchen with stylish benches and

**Type** : Apartment  
**Price** : \$ 1,100,000  
**View** : <https://www.innerrealestate.com.au/sale/vic/inner-city/docklands/residential/apartment/7757847>

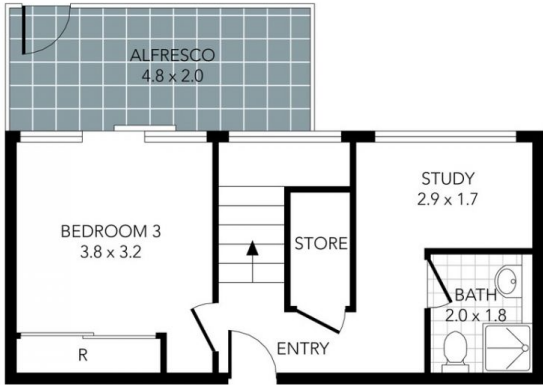


**Anthony Cimino**  
+61 3 9804 5551

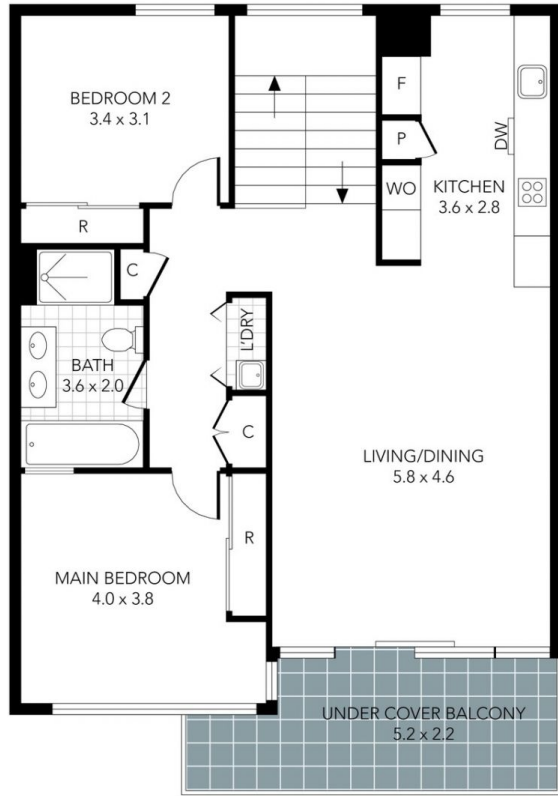


**Annalise Harvey**  
0447 233 044

[For full version visit the website](https://www.innerrealestate.com.au)



GROUND FLOOR



1ST FLOOR

THIS PLAN IS NOT TO SCALE. MEASUREMENTS ARE INDICATIVE AND IN METRES. SITE PLAN REFLECTS APPROXIMATE POSITION OF BUILDINGS ON PROPERTY ONLY AND IS NOT AN ACCURATE REPRESENTATION OF VEGETATION AND OTHER EXTERNAL LANDSCAPE FEATURES. THIS PLAN SHOULD NOT BE RELIED UPON AND INTERESTED PARTIES SHOULD MAKE THEIR OWN ENQUIRIES.