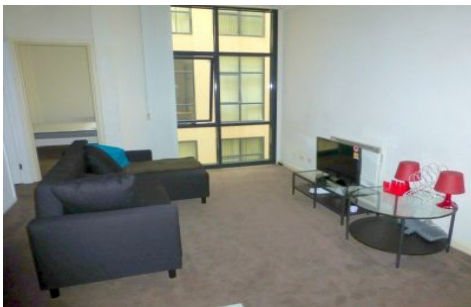




# INNER REAL ESTATE NEXTRE



**1009/339 Swanston Street Melbourne VIC**

**2  1 **

This fantastically located apartment opposite the state library and only moments from Melbourne Central, QV shopping centre and RMIT university. A convenient city pad to live in. Main bedroom with BIR, 2nd bedroom/study with BIR, Kitchen with appliances, open plan living/dining, common laundry.  
An inspection is sure to impress.

**View :** <https://www.innerrealestate.com.au/lease/vic/inner-city/melbourne/residential/apartment/7801305>



**Tim Bush**  
**+61 3 9804 5551**



**Kayani Shahzeb**  
**+61 3 9804 5551**