

58 Ellsworth Crescent Camberwell VIC

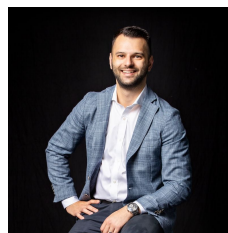
3 2 1

A masterclass in modern lifestyle design, this contemporary haven confirms its appeal with formal and family living spaces and a streamlined attitude that connects indoor and outdoor entertaining with ease in the admired Camberwell High School Zone. From its fashionable façade, the home opens to reveal a sumptuous formal lounge room that soaks up northerly sunshine and showcases sleek timber partition and modern floorboards that continue through to the style savvy kitchen, meals and family room with direct access onto the entertainer's courtyard. Upon the upper level, the three bedrooms rest peacefully and include a glorious master suite with built-in-robos, desk area and ensuite, further served by a family bathroom with toilet and ground floor powder room.

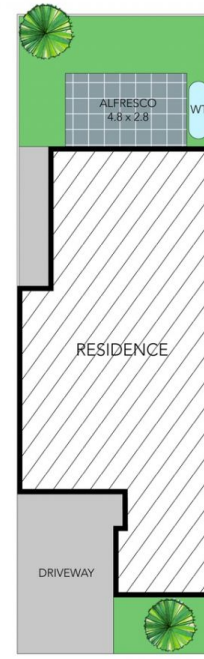
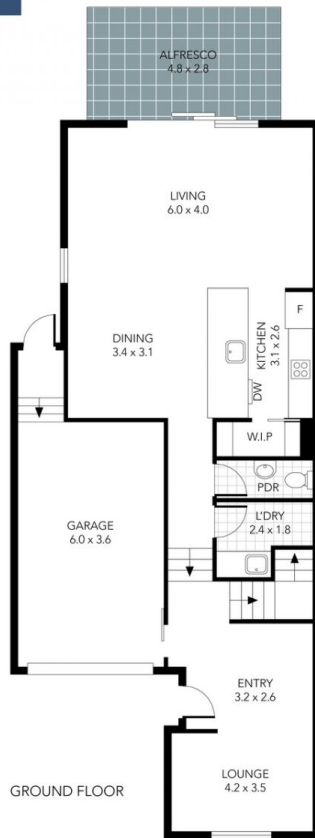
? Three robed bedrooms, including a master bedroom with robes, desk space and ensuite

Price : \$ 1,350,000

View : <https://www.innerrealestate.com.au/sale/vic/east/camberwell/residential/townhouse/7992096>



Anthony Cimino
+61 3 9804 5551



THIS PLAN IS NOT TO SCALE. MEASUREMENTS ARE INDICATIVE AND IN METRES. SITE PLAN REFLECTS APPROXIMATE POSITION OF BUILDINGS ON PROPERTY ONLY AND IS NOT AN ACCURATE REPRESENTATION OF VEGETATION AND OTHER EXTERNAL LANDSCAPE FEATURES. THIS PLAN SHOULD NOT BE RELIED UPON AND INTERESTED PARTIES SHOULD MAKE THEIR OWN ENQUIRIES.