



**INNER REAL ESTATE
NEXTRE**

Private Inspections Made Easy

- Book**
Click "Book an Inspection Time" to select a time. Alternatively click "Contact Agent" and you will be sent a link to the online booking system.
- Inspect**
Our friendly team of Sales and Leasing agents will take you on a private inspection of the property at a time that is suitable for you.
- Update**
By registering you confirm your place at the inspection. You will immediately be informed of any changes and updates to the property including price.



3708/45 Clarke Street Southbank VIC

2 2 1

Located on the 37th floor of the prestigious Platinum tower, you'll enjoy the ultimate inner-city lifestyle.

Boasting a large kitchen with stone bench tops, stainless steel appliances and an abundance of storage, this area flows seamlessly into the open-plan living that is adorned with natural light.

A private balcony offers uninterrupted views of Port Phillip Bay and Albert Park Lake, views that are also offered from the bright and spacious master-bedroom, accompanied by an elegant ensuite bathroom and BIR's.

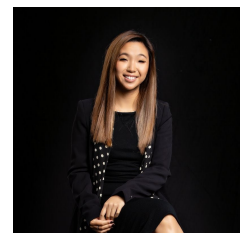
If the level 52 building facilities, comprised of a gymnasium, lap pool, spa, steam room, function room and lounge are not enough, take advantage of your close proximity to key Melbourne attractions such as the Crown Casino, South

Price : \$895 per week

View : <https://www.innerrealestate.com.au/lease/vic/inner-city/southbank/residential/apartment/8027485>



Tim Bush
+61 3 9804 5551



Hayley Tran
+61 3 9804 5551

