



1513/155 Franklin Street Melbourne VIC

2 1 1

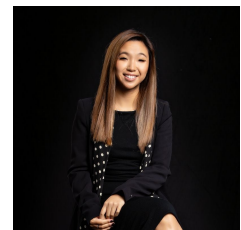
A classy composition of contemporary space and crisp city views, this spacious apartment delivers a seamless lifestyle experience in the 'Fulton Lane' complex where views over the Queen Victoria Market showcase just how convenient your lifestyle is. Embracing clearly defined spaces for living and dining, the residence is full of rewards and perfect the inner-city lifestyle with outstanding resident amenities that include a pool, spa, gymnasium, stylish reception foyer plus an outdoor BBQ terrace.

View : <https://www.innerrealestate.com.au/lease/vic/inner-city/melbourne/residential/apartment/8039505>

- ? Two robed bedrooms with large windows
- ? Bathroom with stylish fitout
- ? Light filled living and dining areas
- ? Kitchen boasting stone benches and mirrored splashback
- ? Stainless steel appliances, integrated dishwasher
- ? Floor-to-ceiling sliding doors onto balcony
- ? Convenient Euro laundry



Tim Bush
+61 3 9804 5551



Hayley Tran
+61 3 9804 5551



THIS FLOOR PLAN IS NOT TO SCALE. MEASUREMENTS ARE INDICATIVE AND IN METRES. VEGETATION IS PLACED FOR ILLUSTRATIVE PURPOSES ONLY. THIS PLAN SHOULD NOT BE RELIED UPON. INTERESTED PARTIES SHOULD MAKE THEIR OWN ENQUIRIES.



THIS FLOOR PLAN IS NOT TO SCALE. MEASUREMENTS ARE INDICATIVE AND IN METRES. VEGETATION IS PLACED FOR ILLUSTRATIVE PURPOSES ONLY. THIS PLAN SHOULD NOT BE RELIED UPON. INTERESTED PARTIES SHOULD MAKE THEIR OWN ENQUIRIES.