



1104/105 Clarendon Street Southbank VIC

2 1

** The rental will be discounted to \$580 per week / \$2520 pcm, until November 2024, the rent will then revert back to \$650 per week / \$2520 pcm thereafter.**

Price : \$650 per week

View : <https://www.innerrealestate.com.au/lease/vic/inner-city/southbank/residential/apartment/8049548>

This is your opportunity to secure a apartment in the highly coveted Shadow Play complex in the Heart of Melbourne's Entertainment Precinct.

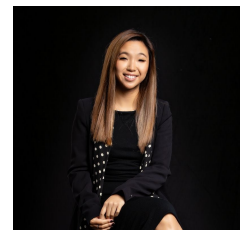
The Apartment includes a functional Kitchen with Smeg appliances and plenty of storage for the discerning home Chef.

Two light filled bedrooms and a central bathroom complete the package within this perfect city pad.

Building itself contains all the must have facilities and much more including:



Tim Bush
+61 3 9804 5551



Hayley Tran
+61 3 9804 5551