



1301/500 Elizabeth Street Melbourne VIC

2 1

A vision of modern design, this spectacular apartment perfectly balances lifestyle and leisure with its easy-care layout and impressive resort style facilities, whilst relishing placement only footsteps from Queen Victoria market in the heart of Melbourne. Ideal for busy professionals or those adding to their investment portfolio, the residence rests only a stone's throw from Melbourne Central, RMIT, Melbourne Uni, Carlton Gardens, Flagstaff Gardens and Bourke Street Mall.

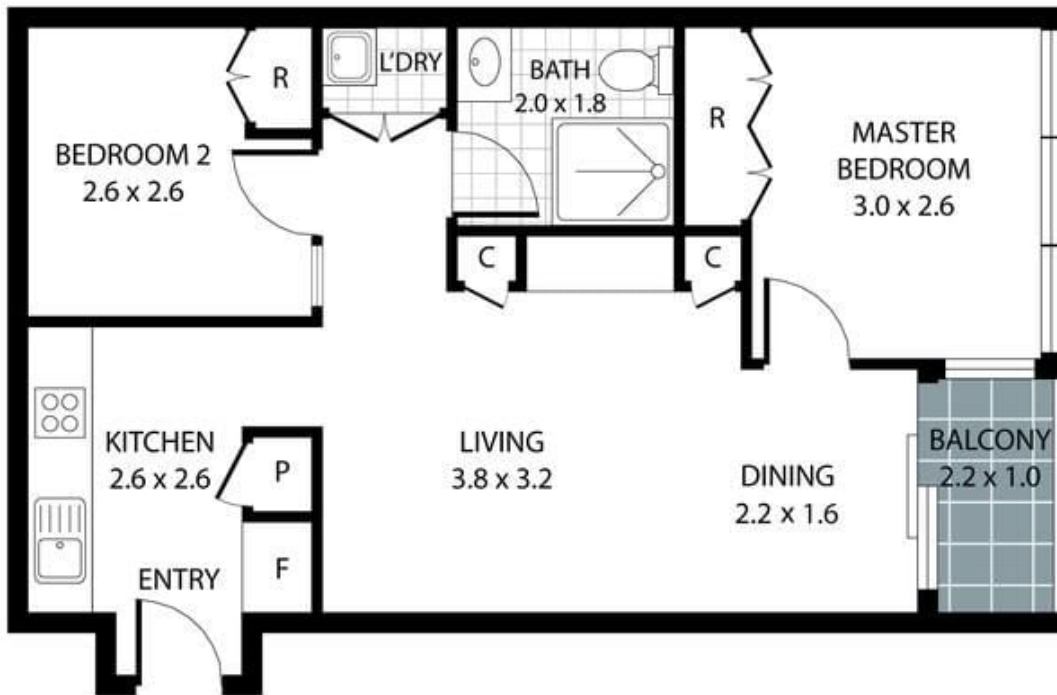
- ? Two robed and carpeted bedrooms
- ? Central bathroom with floor-to-ceiling tiles
- ? Kitchen equipped with stainless steel appliances
- ? Living and dining boasting built-in storage
- ? Sliding doors opening onto balcony
- ? Discrete Euro laundry
- ? Split system heating/air conditioning

Price : \$700 per week

View : <https://www.innerrealestate.com.au/lease/vic/inner-city/melbourne/residential/apartment/8076979>



Tim Bush
+61 3 9804 5551



THIS FLOOR PLAN IS NOT TO SCALE. MEASUREMENTS ARE INDICATIVE AND IN METRES. VEGETATION IS PLACED FOR ILLUSTRATIVE PURPOSES ONLY.
THIS PLAN SHOULD NOT BE RELIED UPON. INTERESTED PARTIES SHOULD MAKE THEIR OWN ENQUIRIES.