



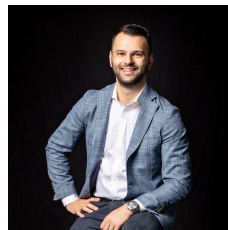
66/604 St Kilda Road Melbourne VIC

2 2 1

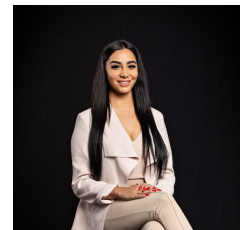
Exquisitely designed to combine the simplicity of style with a location to love, this superb apartment encompasses a beautiful open plan layout with views of Port Phillip Bay and the City Skyline. Positioned to perfection along Melbourne's most iconic boulevard, the apartment takes convenience to another level with a vast selection of lifestyle amenities on your doorstep, including Albert Park Lake, beaches, restaurants, cafes and bars, Fawkner Park, Prahran Market, South Melbourne Market and of course the CBD.

- ? Two robed bedrooms; master with ensuite featuring a bath
- ? Second bathroom with toilet and concealed laundry
- ? Open plan living and dining zone bathed in northerly sunlight

Type : Apartment
Price : \$490,000
View : <https://www.innerrealestate.com.au/sale/vic/inner-city/melbourne/residential/apartment/8088421>

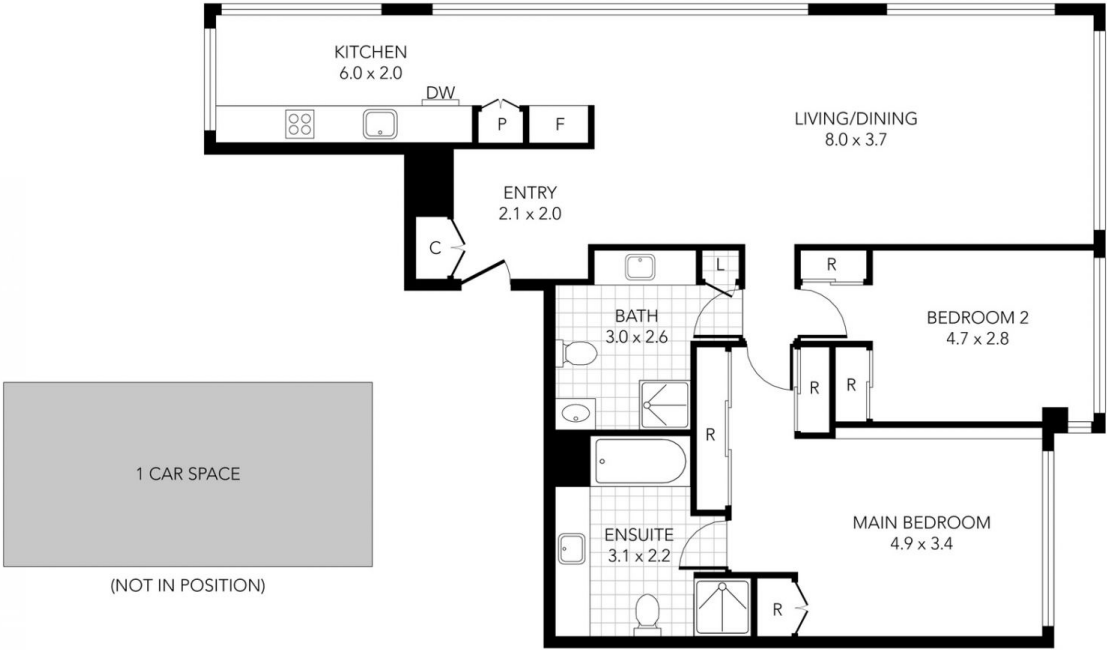


Anthony Cimino
+61 3 9804 5551



Maha Yehia
+61 3 9804 5551

[For full version visit the website](https://www.innerrealestate.com.au)



THIS PLAN IS NOT TO SCALE. MEASUREMENTS ARE INDICATIVE AND IN METRES. SITE PLAN REFLECTS APPROXIMATE POSITION OF BUILDINGS ON PROPERTY ONLY AND IS NOT AN ACCURATE REPRESENTATION OF VEGETATION AND OTHER EXTERNAL LANDSCAPE FEATURES. THIS PLAN SHOULD NOT BE RELIED UPON AND INTERESTED PARTIES SHOULD MAKE THEIR OWN ENQUIRIES.