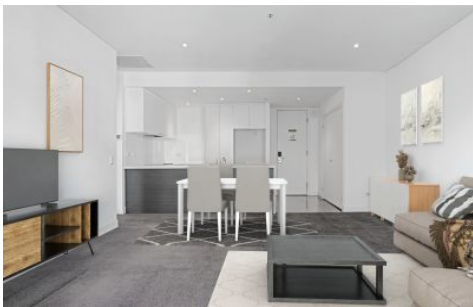




# INNER REAL ESTATE NEXTRE



**T606/348 St Kilda Road Melbourne VIC**

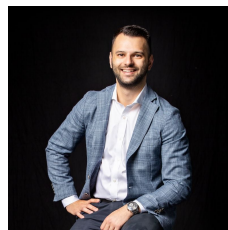
1 1

Supremely spacious and superbly appointed, this impressive apartment is certain to excite the lifestyle savvy with its building amenities creating a holiday vibe and including an equipped gym, indoor pool, spa and sauna. Perfected further by its incredible position on the doorstep of the Shrine of Remembrance, Royal Botanic Gardens, Albert Park Lake and trams, moments from NGV, Flinders Street Station, Fed Square and the Crown entertainment complex.

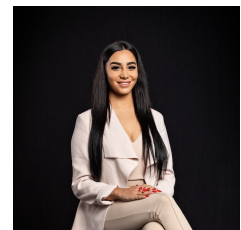
- ? Robed bedroom with large windows for natural light
- ? Stylish bathroom boasting a walk-in shower
- ? Expansive living and dining zone that's carpeted for comfort
- ? Kitchen featuring waterfall stone benches, stove, oven

[For full version visit the website](#)

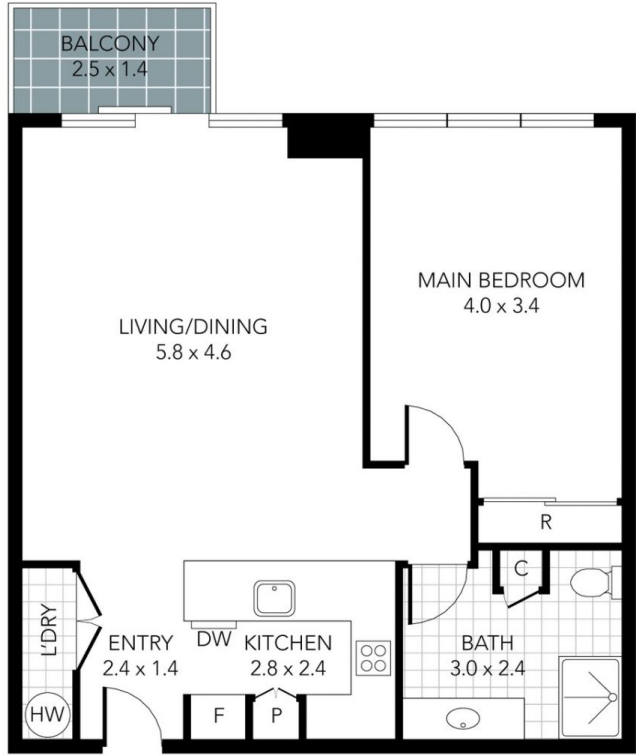
**Type** : Apartment  
**Price** : \$399,000  
**Building Size** : 68 sqm  
**View** : <https://www.innerrealestate.com.au/sale/vic/inner-city/melbourne/residential/apartment/8108232>



**Anthony Cimino**  
+61 3 9804 5551



**Maha Yehia**  
+61 3 9804 5551



Internal Area: 66m<sup>2</sup>

THIS PLAN IS NOT TO SCALE. MEASUREMENTS ARE INDICATIVE AND IN METRES. SITE PLAN REFLECTS APPROXIMATE POSITION OF BUILDINGS ON PROPERTY ONLY AND IS NOT AN ACCURATE REPRESENTATION OF VEGETATION AND OTHER EXTERNAL LANDSCAPE FEATURES. THIS PLAN SHOULD NOT BE RELIED UPON AND INTERESTED PARTIES SHOULD MAKE THEIR OWN ENQUIRIES.