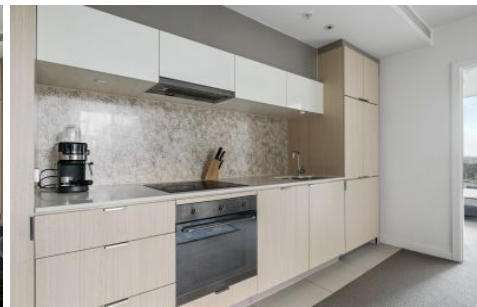




INNER REAL ESTATE NEXTRE



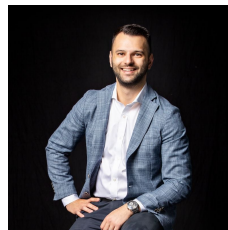
2807/135 City Road Southbank VIC

2 1 1

Come home to light-filled luxury and breathtaking views every day in this super-stylish two-bedroom apartment, superbly set on the 28th floor in the resort-style 'Wrap on Southbank' building. Take a stroll to Crown Entertainment, Boyd Park and Community Hub, the Arts Precinct and riverside restaurants, with Melbourne Square Woolworths just around the corner and the fresh produce of South Melbourne Market only moments away.

- ? Two robed bedrooms with floor-to-ceiling east-facing windows
- ? Modern bathroom with toilet
- ? Carpeted open plan living and dining zone
- ? Kitchen with smooth stone surfaces and stainless-steel appliances

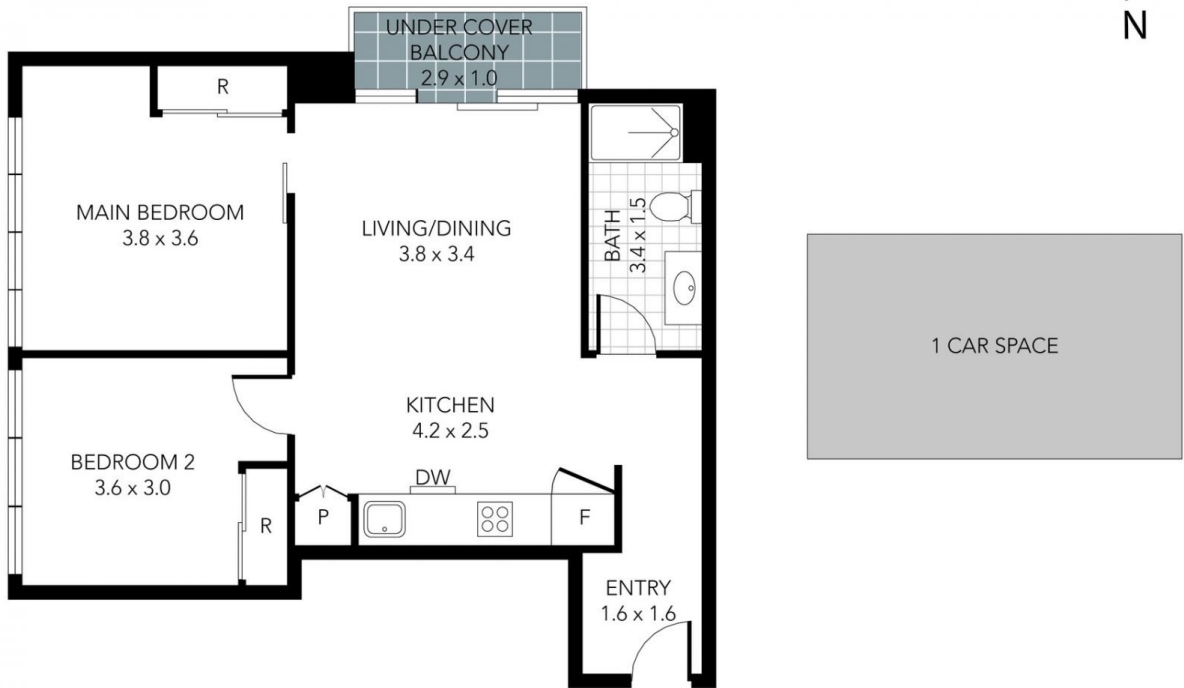
Type : Apartment
Price : \$500,000 - \$550,000
View : <https://www.innerrealestate.com.au/sale/vic/inner-city/southbank/residential/apartment/8123439>



Anthony Cimino
+61 3 9804 5551

[For full version visit the website](https://www.innerrealestate.com.au)

<https://www.innerrealestate.com.au>



Internal Area: 59m²

THIS PLAN IS NOT TO SCALE. MEASUREMENTS ARE INDICATIVE AND IN METRES. SITE PLAN REFLECTS APPROXIMATE POSITION OF BUILDINGS ON PROPERTY ONLY AND IS NOT AN ACCURATE REPRESENTATION OF VEGETATION AND OTHER EXTERNAL LANDSCAPE FEATURES. THIS PLAN SHOULD NOT BE RELIED UPON AND INTERESTED PARTIES SHOULD MAKE THEIR OWN ENQUIRIES.