



### 207B/434 St Kilda Road Melbourne VIC

Located near the corner of the Toorak Road and St Kilda Road intersections, within the renowned 434 St Kilda Road building, this property offers more than just a location.

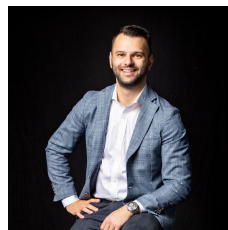
#### Features:

- 2 offices and reception area
- 28sqm approx.
- North facing widows
- Communal kitchens and bathrooms on each floor
- Perfectly positioned with trams plus the Shrine of Remembrance and the new ANZAC Station completing 2025 approx.

Don't miss out! Contact Anthony Cimino 0400 500 903 to

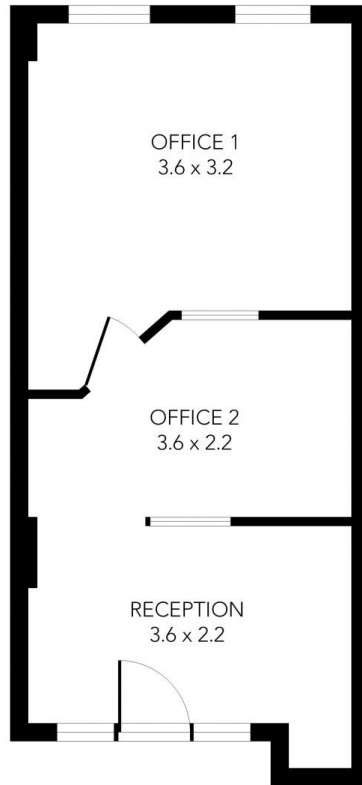
[For full version visit the website](https://www.innerrealestate.com.au)

<b>Type</b>	: Offices
<b>Price</b>	: \$99,000
<b>Building Size</b>	: 28 sqm
<b>View</b>	: <a href="https://www.innerrealestate.com.au/sale/vic/inner-city/melbourne/commercial/offices/8125014">https://www.innerrealestate.com.au/sale/vic/inner-city/melbourne/commercial/offices/8125014</a>



**Anthony Cimino**  
+61 3 9804 5551

207B/434 St Kilda Road, Melbourne



THIS FLOOR PLAN IS NOT TO SCALE. MEASUREMENTS ARE INDICATIVE AND IN METRES. VEGETATION IS PLACED FOR ILLUSTRATIVE PURPOSES ONLY.  
THIS PLAN SHOULD NOT BE RELIED UPON. INTERESTED PARTIES SHOULD MAKE THEIR OWN ENQUIRIES.