



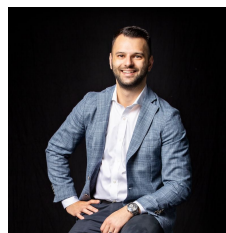
402/589 Elizabeth Street Melbourne VIC

2 1

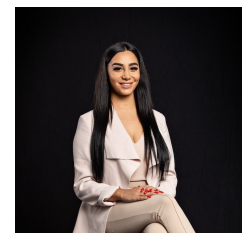
Cleverly designed to maximise space, this streamlined apartment showcases a stylish aesthetic and magnificent city views with its spacious interior flooded with sunlight thanks to floor-to-ceiling windows and doors opening onto the balcony. Perfect as a city base or investment, the residence enjoys easy access to RMIT, Melbourne University, Queen Victoria Market, bustling Lygon Street shops and eateries, Carlton Gardens, Royal Exhibition Building, Melbourne Museum and of course all that central Melbourne has to offer.

- ? Two bedrooms both benefitting from built-in-robos
- ? Central bathroom with shower, toilet and vanity
- ? Stylish kitchen equipped with stone benches and quality appliances

Type : Apartment
Price : \$429,000
View : <https://www.innerrealestate.com.au/sale/vic/inner-city/melbourne/residential/apartment/8155057>

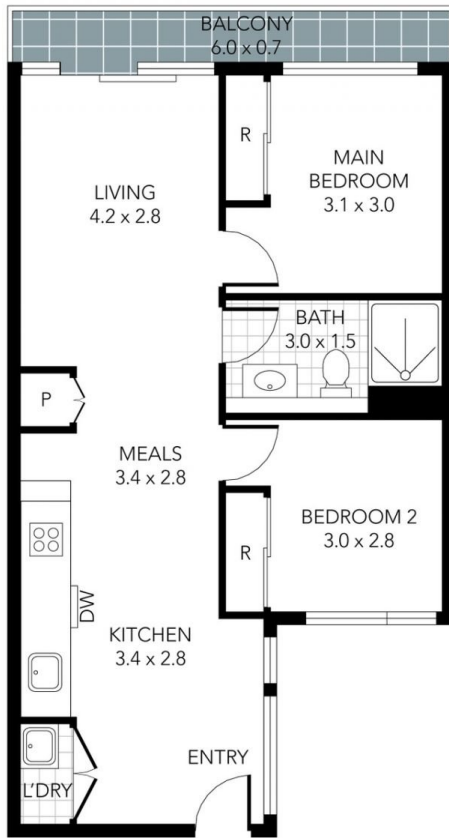


Anthony Cimino
+61 3 9804 5551



Maha Yehia
+61 3 9804 5551

[For full version visit the website](https://www.innerrealestate.com.au)



THIS PLAN IS NOT TO SCALE. MEASUREMENTS ARE INDICATIVE AND IN METRES. SITE PLAN REFLECTS APPROXIMATE POSITION OF BUILDINGS ON PROPERTY ONLY AND IS NOT AN ACCURATE REPRESENTATION OF VEGETATION AND OTHER EXTERNAL LANDSCAPE FEATURES. THIS PLAN SHOULD NOT BE RELIED UPON AND INTERESTED PARTIES SHOULD MAKE THEIR OWN ENQUIRIES.