



## 234/51 Rathdowne Street Carlton VIC

1 1 1

Smartly styled with clever design ideas, this studio sensation sits in the Exhibition Mews complex directly opposite Carlton Gardens and only moments from the heart of the CBD where you can indulge in theatre attractions, fine dining, retail shopping, Queen Victoria Market and Universities. Introducing you inside, modern flooring highlights the bedroom and living space with bifold doors hiding the kitchen and the renovated bathroom accompanied by a dressing space, while the building is also equipped with a gymnasium and sauna.

- ? Open plan living and bedroom with modern flooring
- ? Hidden kitchen with bifold doors to keep mess out of sight
- ? Renovated bathroom with sleek finishes
- ? Car park onsite

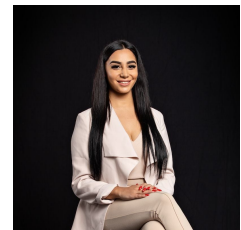
**Type** : Apartment

**Price** : \$320,000

**View** : <https://www.innerrealestate.com.au/sale/vic/inner-city/carlton/residential/apartment/8162152>



**Anthony Cimino**  
+61 3 9804 5551



**Maha Yehia**  
+61 3 9804 5551

[For full version visit the website](https://www.innerrealestate.com.au)



Internal Area: 25m<sup>2</sup>

THIS PLAN IS NOT TO SCALE. MEASUREMENTS ARE INDICATIVE AND IN METRES. SITE PLAN REFLECTS APPROXIMATE POSITION OF BUILDINGS ON PROPERTY ONLY AND IS NOT AN ACCURATE REPRESENTATION OF VEGETATION AND OTHER EXTERNAL LANDSCAPE FEATURES. THIS PLAN SHOULD NOT BE RELIED UPON AND INTERESTED PARTIES SHOULD MAKE THEIR OWN ENQUIRIES.